

# DecXorators®



## Versatility & Durability

- Virtually maintenance-free
- Easy to install with standard tools
- UV-stabilized / fade-resistant
- A wide array of uses

# Define, accent & conceal



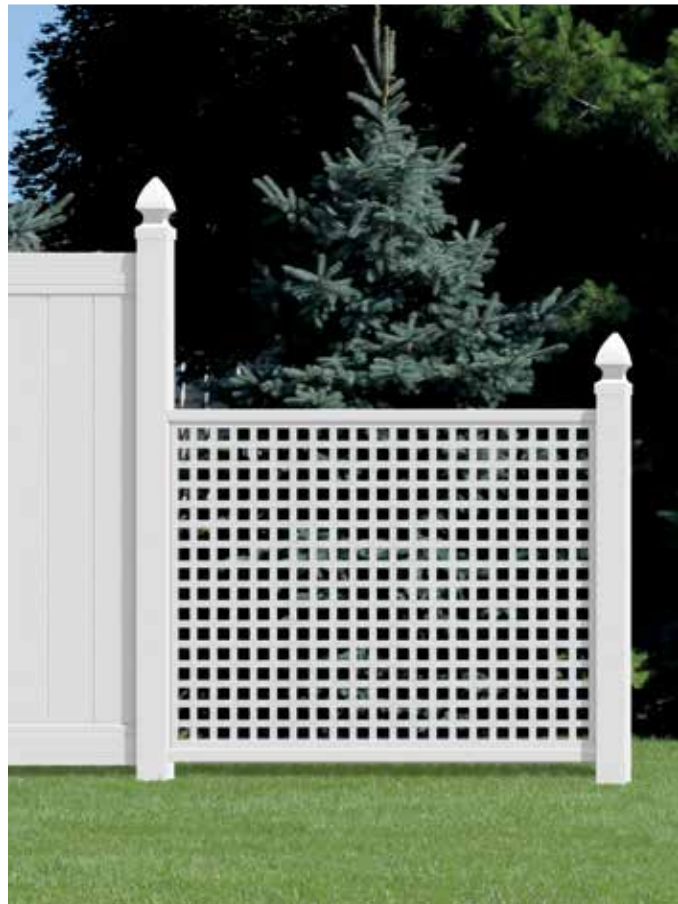
For decades, lattice has been used primarily as an attractive skirt around porches and decks. But over the past several years, builders, architects and homeowners have discovered lattice's amazing versatility.

Use lattice as a privacy screen. Incorporate it into a fence design. Try it as an accent for planters or to add detail to a trellis, gazebo or outdoor kitchen. It's also great for concealing the things you have to live with but don't want to look at, such as utilities, trash cans or compost piles.

Deckorators plastic lattice makes it easy. Durable and sturdy, it won't rot, split or peel. It's also available in a wide range of colors and styles.

Look around your house and yard. Then let your imagination go! You'll find more than one place to use Deckorators plastic lattice.

[Deckorators.com](http://Deckorators.com)



## Pattern Options

**LIFETIME**  
LIMITED WARRANTY

Deckorators plastic lattice comes in a variety of styles and sizes. Choose the look that's right for your application.



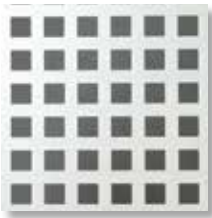
### Classic Diamond

- 2-3/4" opening
- A timeless, beautiful design
- 4' x 8' available in all colors
- 2' x 8' available in white only



### Privacy Diamond

- 1-1/16" opening
- Close-knit strips provide beauty and increased privacy
- 4' x 8' available in all colors



### Privacy Square

- 1-3/4" opening
- Close-knit strips in a decorative square pattern, offering a unique look combined with increased privacy
- 4' x 8' available in white only



### Don't forget cap and divider mouldings.

- Easy-to-install cap and divider mouldings fit all lattice panels
- Enhance the appearance of installed lattice
- Available in all 13 colors for exact color match with lattice
- Length - 97"



## Ultralight Lattice

**10** YEAR  
LIMITED  
WARRANTY

### Ultralight Classic Diamond

- 2-3/4" opening
- Same appearance as traditional Classic Diamond
- Light and economical
- Available in white 4' x 8' and 2' x 8'

## Color Options

Deckorators plastic lattice complements virtually any house or trim color.



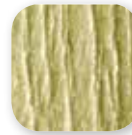
White



Almond



Brownstone



Khaki



Gray



Clay



Cedar



Redwood



Dark Brown



Charcoal



Light Green



Dark Green

\* The colors represented here are reproduced with printers' inks and may vary from actual products. For actual product colors, please visit your Deckorators dealer.



- **Outdoor living spaces**—  
Create a private outdoor retreat with a plastic lattice trellis, arbor, gazebo or pergola.
- **Garden accents**—  
Spruce up flower bed edging, planter boxes, garden boundary fencing, or outdoor ceilings and shading.
- **Skirting and covers**—  
Enhance your deck, porch, patio, stair railing, screen door, mobile home or beam foundation.
- **Enclosures**—  
Protect pets or hide unsightly areas, such as air conditioners or trash receptacles.
- **Interior decorating**—  
Get creative with decorative screens, or enhance furniture and cabinetry.



Beautify your home &  
outdoor living space.

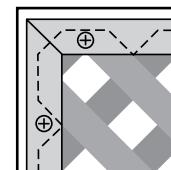
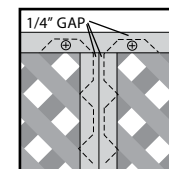
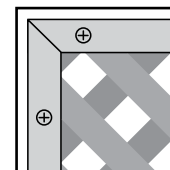
## Installation Tips

Deckorators plastic lattice can be cut and drilled using standard tools. Use rustproof or rust-resistant fasteners to maintain the beauty of your project over time. For a distinguished look, frame panels with plastic caps and connect panels with plastic dividers. Always allow a 1/4" gap between the lattice edge and moulding for the panel to expand and contract with temperature changes. Lattice must be attached to a self-supporting structure or frame. Suspend lattice from top row of fasteners.

- Along the top, pre-drill oversized holes every two feet through both the moulding and lattice with a 1/4" drill bit and fasten with screws. Do not over-tighten screws.
- Along the sides and bottom, pre-drill oversized holes every two feet through the moulding only and fasten with screws. Do not over-tighten screws.

Do not install lattice in a horizontal application. Without proper support lattice will be prone to sagging, rippling and heat retention.

Deckorators Lattice is a non-porous material. Coatings such as paints and stains do not adhere well to the surface.



Universal Consumer Products, Inc. offers express limited warranties for both Deckorators Plastic Lattice and Ultralight Lattice. These written warranties are available at: [deckorators.com](http://deckorators.com)