



Clean Up & Storage

Clean hands and tools with soapy water. The paint measuring syringe can be cleaned by flushing with water and reused.

For best shelf life, whether mixed or unmixed, store eXact color™ in a cool, dry location. Once mixed, use any remaining product within one year.

Caution: Carefully handle the activator! Keep away from skin and eyes. If skin or eye contact occurs, flush with large amounts of water. Once the activator is mixed into the caulk base it is safe for handling. Immediately discard the activator packaging and keep away from children. See the MSDS for additional details.

Where Not To Use eXact color™:

- Areas of water submersion or frequent, prolonged puddling
- Areas with high foot and/or vehicle traffic (driveways, sidewalks, decks, patios, etc.)
- Roofs exposed to prolonged dampness (use Sashco's Through The Roof!® instead)
- Will not adhere to or is incompatible with Kynar®, Polypropylene, Silicone, Polyethylene, Teflon®, and Waxes.

Warranty

Sashco warrants this product will substantially meet published specifications on the date of sale. If it fails to do so, return unused portion with original sales receipt for replacement or refund, at Sashco's sole option. These are purchaser's sole and exclusive remedies for any breach of warranty. Purchaser must determine suitability of product for purchaser's specific needs and assumes all risk associated with its use.

Except as stated above there are no warranties for this product. **The foregoing express warranty is in lieu of all other warranties, express or implied, including without limitation implied warranties of merchantability or fitness for a particular purpose, which warranties are specifically excluded and disclaimed.** This Limited Warranty gives you specific legal rights. You may have other rights which vary from state to state. Some states do not allow exclusion of implied warranties in consumer or other sales, limitations on the duration of implied warranties, or exclusion or limitation of incidental or consequential damages. Thus, the limitations or exclusions contained above may not apply to you depending upon your specific circumstances.

TYPICAL PROPERTIES:

Property	Value
Packaging	9.5 oz. plastic cartridge (final yield after mixing), 1 activator pack, 1 measuring syringe, 1 nozzle, 1 clear cap
Joint Size	Maximum 1/2"
Application Range	40°F to 90°F (4°C to 32°C) surface temp.
Service Range	-30°F to 250°F (-34°C to 121°C)
Tensile Properties	Recovery at 50% stretch: 100% in 3 minutes Recovery at 100% stretch: 96% in 5 minutes
VOC	79.4 g/L, <1.5% by weight (once the activator is added to the caulk base) <ul style="list-style-type: none"> • pH of caulk base before use: 6.7 • pH of activator: 12 • pH of mixed caulk ~8.5 (depending on pH of paint or stain added to caulk base)
Viscosity	< 50,000 cps. (caulk base before thickened)
Density of caulk base	8.6 lbs./gal.

TEST DATA:

Property	Results	Test Method
Durability	12.5% joint movement (10 cycles @ -15°F (-26°C))	ASTM C-719
Hardness, Shore A	33 (21-day cure)	ASTM C-661
Slump	< 1/8"	ASTM D-2202
Solids	55.6% by weight (of caulk base) 59.7% by volume	ASTM C-1250
Extrusion Rate	750 g/min (1/8" orifice at 40 psi)	ASTM C-603
Freeze-Thaw Stability	3 cycles max at 0°F. No freeze/thaw stability at -15°F. Keep from freezing	ASTM C-731
Low Temp. Flexibility	Pass (not artificially weathered)	ASTM C-734
Tack-free	Less than 30 minutes	ASTM C-679
Cured	4-5 days (dependent on temp., humidity and bead size)	ASTM C-679
Adhesion-in-peel**	Concrete • Glass	ASTM C-794
Passing Substrates	PVC • Wood • Tile	

** Not comprehensive. Contact Sashco with questions about other substrates.

SPECIFICATIONS:

- Meets FHA requirements.
- Meets the performance requirements of ASTM C-834
- Meets or exceeds Federal Specification TT-S-00230 C

The data reported here are believed to be reliable. No warranty is made concerning the accuracy of or the results obtained from their use.

*McKanic®, Teflon® and Kynar® are registered trademarks of their respective owners.

KEEP OUT OF REACH OF CHILDREN



U.S. Patent No. 8,100,296

www.sashco.com • 1-800-767-5656
10300 E. 107th Place, Brighton, CO 80601

XCT002-0412



Custom Color Caulking – Just Add Paint!





is the easiest and fastest way to create your own custom

color sealant. No special tools are required, simply follow the mixing instructions using your latex paint, water-based solid stain, or universal pigments. Use patent-pending **eXact color™ sealant** where you want a perfect color match or to highlight an architectural feature with a contrasting color caulk. Imagine the possibilities! Unleash the artist in you and take your design project to the next level by creating the **eXact color™ sealant** for your application.

Where to Use:

Interior Applications:

- Walls
- Wallpaper
- Tile
- Backsplashes
- Wood or vinyl molding & baseboards

Exterior applications:

- Siding (wood, fiber cement board, vinyl)
- Around windows or shutters
- On brick, stone and stucco homes

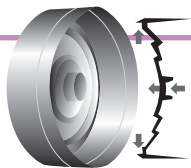
Why eXact color™:

Water based sealant—easy to color, easy to apply, easy to clean-up, safe for the environment.

Excellent adhesion—won't pull away from surfaces.

Extreme elasticity—won't tear with normal joint movement.

Infinite color possibilities—Use any latex paint, water-based solid stain, or universal pigments to create the perfect color match for your application. If you use a semi-transparent stain, the caulk will dry darker than the stain. If a textured paint is used, the texture will be imparted to **eXact color™** as well. Exact color will match paint once it has skinned over, within about 4 hours.



Alyster Plunger

9.5 cartridges come with a unique Alyster plunger.

A flexible telescopic diaphragm not only stops material flow, it actually pulls material back into the nozzle!

- **Tight Seal**—Increases shelf life and minimizes leakage.
- **Stop Flow**—The flexible telescopic diaphragm assures that material flow will stop when caulk gun pressure is released.

Before You Start...

Make certain that the sealant will be protected from water for 24-48 hours. **eXact color™** may be applied to damp surfaces but should not be exposed to active moisture until cured.

- Natural shrinkage will give the joint a concave appearance; multiple applications may be needed to fill the joint flat.

- Apply to surface temperatures of 40°F-90°F (4°-32°C).

Gather the following items before you begin to add paint, stain or pigments to eXact color™:

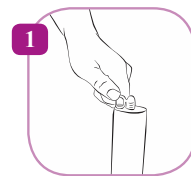
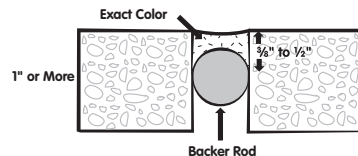
- A stir stick for thoroughly mixing your paint or stain.
- Latex gloves to keep paint and activator off your hands.
- Scissors to open the activator packet.
- Paper towels or rags to clean up occasional air bubble spurts that may occur.
- A beading tool for a crisp caulking line and proper bead size and shape.

Substrate/Surface Preparation:

- If dirt or oils are present, wash with any household cleaner, rinse to remove and allow to dry.
- Remove any old caulk, especially silicone. Use a silicone remover such as McKanica® Silicone Caulk Remover.

Joint design:

Insert backer rod into joints deeper than ½" to provide for proper sealant depth and a stronger, longer lasting seal that actually uses less **eXact color™**. (refer to diagram for details).



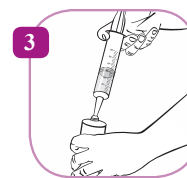
Pull the Tab



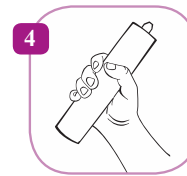
Extract Paint

Mixing eXact color™:

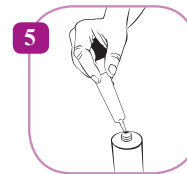
1. Place the cartridge vertically on a flat surface. While firmly holding the cartridge, pull straight up on the tab.
2. After thoroughly mixing your paint or stain, fill syringe with 30 mL of paint.



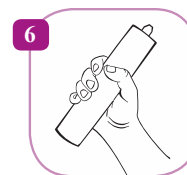
Inject Paint



Shake for 60 Seconds



Add Activator



Shake for 60 Seconds



Wait 30 Minutes

3. Inject the paint or stain into the top of the cartridge.

4. Screw on the clear cap and shake the cartridge for at least 60 seconds—either by hand or in a paint shaker/mixer.

5. Remove the cap, open the activator pack and squeeze the entire contents into the cartridge.

6. Replace the cap and **vigorously** shake the cartridge for at least 60 seconds—either by hand or in a paint shaker/mixer. Ensure color is evenly distributed throughout. If not, just shake the cartridge for an additional 30-60 seconds.

7. Wait for approximately **30 minutes** for the caulk to fully set.
8. Discard the activator packet and syringe, or thoroughly rinse out syringe and save it for future use.

Applying eXact color™:

1. Remove cap and attach the nozzle. Cut the nozzle to desired bead size.
2. Gun **eXact color™** into the joint and release the trigger at the end of each bead. (Note: Some air pockets may occur in **eXact color™** after complete mixing and may lead to an occasional spurt of caulk during application.)
3. For a smoother bead, use a beading tool or a damp foam or paint brush.
4. **eXact color™** turns darker as it cures and will be an exact color match to your paint once dry.

For additional information visit www.sashco.com